

# Heidelberg Artists Society



**Postal address:**  
PO Box 633,  
Rosanna VIC 3084  
**e-Mail:** [mail@has.org.au](mailto:mail@has.org.au)  
**Website:** [www.has.org.au](http://www.has.org.au)  
**FB:** Heidelberg Artists Society  
**Instagram:** [heidelbergartsociety](https://www.instagram.com/heidelbergartsociety)

## NEWSLETTER JUNE 2025

**Incorporation No. A0028389X**  
**ABN 86 288 080 470**  
**Saturday Meetings:**  
**Main Rd Community Hall**  
86 Main Road,  
Lower Plenty VIC 3093  
(Opposite Lower Plenty shops & Aldi)

### HAS COMMITTEE

**President:**  
Katherine Chouliaras Lewis  
0407 615 865  
e-Mail: [kchol@hotmail.com](mailto:kchol@hotmail.com)  
**Vice President:**  
Dushka Mihajlovska  
**Secretary:**  
Michelle Forssberg  
**Assistant Secretary:**  
Grahame Macintosh  
**Treasurer:**  
Ciri Nigro  
**Assistant Treasurer:**  
Yani Moediman

### GENERAL COMMITTEE MEMBERS

Ingrid Camille  
Dianne Foley  
Lisa Knight  
Melissa Lapadula  
Bronwen Wiltshire  
Pam Ziedas

### HAS MEMBERS WITH SPECIAL DUTIES

**Art Show Coordinator:**  
Katherine C Lewis  
**Art Show Sub-Committee:**  
Michelle Forssberg  
Dushka Mihajlovska  
**Facebook Administrators:**  
Katherine C Lewis  
Dushka Mihajlovska  
**Graphics Designer**  
Melissa Lapadula  
**Instagram Administrator:**  
Katherine C Lewis  
**Newsletter Editor:**  
Katherine C Lewis  
e-Mail: [kchol@hotmail.com](mailto:kchol@hotmail.com)  
**OH&S Officer:**  
Julie Cunningham  
**Paint-Away Coordinator**  
Carolyn Aitken  
**Plein-Air Painting Coordinator:**  
Tom Lenard  
**Portraiture Coordinator:**  
Grahame Macintosh  
**Portraiture Assistant**  
Julie Cunningham  
**Website Editor:**  
Katherine C Lewis  
**Website Assistant:**  
Pam Ziedas

### PRESIDENT'S REPORT



Dear Members,

Winter is here, and while the weather may be chilly, our creative energy is absolutely *warming things up*! It's been a joy to see the smiles, the chatter, and the wonderful hum of activity at our Main Road Community Hall on Saturdays, and now also at our vibrant **pop-up 'Art Show' shop** at **Warringal Shopping Centre**. We've also been busy preparing for our much-anticipated **HAS Art Exhibition** at **Loft 275 Gallery, Ivanhoe Library and Cultural Hub (ILCH)**. What an exciting time for our society!

#### HAS ART SHOW – POP-UP SHOP AT WARRINGAL SHOPPING CENTRE

A heartfelt **thank you** to Warringal Shopping Centre Management, and especially to **David Knell** and **Irene Crook**, for the opportunity to once again showcase our talented members' work in our pop-up shop, located at the **Burgundy Street entrance**, 46 Burgundy St, Heidelberg.

Our shop is open **Monday to Saturday, 10:30am–4:30pm**, and it's filled with an impressive array of original artworks, prints, handcrafted jewellery, greeting cards, and woollen creations by our talented HAS members.

A big **shout-out to Ron Ritchie** for generously providing his Ute and moving know-how, to help transport equipment from our Main Rd Community Hall, to the pop-up shop at Warringal Shopping Centre. Thanks also to everyone who helped with the setup on **Tuesday 13 May 2025**. Your support made it all possible!

Since our official opening on **Saturday 17 May**, we've been thrilled to see a surge in interest and foot traffic, thanks to our efforts in spreading the word via social media, flyers, local radio, Banyule Council, MPs, 26 local schools, libraries, and shopping precincts. Most importantly, we've seen a steady stream of **sales and glowing feedback**!

A huge thank you to our HAS Committee and volunteers for helping with rosters and flyer distribution, your enthusiasm and commitment are truly making a difference. Please remember to check the roster folder at the shop and fill in any available timeslots with your name and contact details. Also, ensure I have a record of your vehicle rego, make and model for management. Otherwise, your car could be towed away or you could receive a hefty fine or both.

#### A VISIT FROM KATE THWAITES MP

We were honoured to welcome **Kate Thwaites MP** on **Monday 16 June 2025** at our pop-up shop. Kate was very impressed by the quality, diversity, and skill on display. Her encouraging feedback meant a lot to our members. A big thank you to, Kate and to Carla, for capturing a lovely group photo during her visit. What a special moment for us all!



#### WELCOME TO OUR NEW MEMBERS

Please join us in giving a warm welcome to our newest HAS members: **Kim O'Bree, Maria Tan, and Janice Werbicky**. We're excited to have you with us and can't wait to share many creative experiences ahead!

#### 'PAINT-AWAY' & 'EN PLEIN AIR PAINTING' COORDINATORS

A heartfelt thank you to **Tom Lenard** for your continued dedication as our **En Plein Air Painting Coordinator**. We truly appreciate your support and look forward to enjoying more inspiring outdoor painting sessions together when the warmer months return.

Congratulations and thank you to **Carolyn Aitken** for stepping into the role of **'Paint-Away' Coordinator**. We're excited about the prospect of upcoming overnight painting and social trips filled with creativity, connection, and shared artistic experiences.

## HAS SOCIAL LUNCHEON – JULY 2025

You and a partner invited to our **HAS Social Lunch** on **Saturday 26 July at 12:30pm** at the **Templestowe Hotel**, 23 Parker Street, Lower Templestowe. We already have 27 confirmed attendees, so make sure you **RSVP before 12 July** to secure your spot.

**Just a reminder:** We will not meet at the Main Rd Community Hall on this date. Looking forward to a great afternoon of good food, good company, laughter, connection, and conversation!

## HAS ART EXHIBITION – THEME/TITLE VOTING RESULTS

Thank you to everyone who submitted suggestions for the theme/title of our upcoming HAS Art Exhibition at the ILCH. We received **64** thoughtful and creative entries, and after a lively member vote, we're thrilled to announce the winners:

**'The Magic of Art'** – 1st Place with 8 votes – Congratulations to **Dushka Mihajlovska!**

**'From Heidelberg, With Art'** – 2nd Place with 6 votes – Kathy Lewis.

Tied 3rd Place with 4 votes each: **'60 Years of Creativity'** – Dianne Foley. **'Echoes of Expression'** – Arezou Farahani.

**'Echoes of Inspiration'** – Kathy Lewis. **'Rhythm of Colours'** – Dushka Mihajlovska.

Thank you to everyone who contributed. Your creativity continues to inspire!

## CELEBRATING OUR HAS JUBILEE ~ 60TH ANNIVERSARY!! & FIRST EVER ~ HAS ART EXHIBITION AT IVANHOE LIBRARY & CULTURAL HUB!!

**Save the date: OPENING CELEBRATION ~ Thursday, 14th August 2025!**

We're excited to invite you to our very first **'Heidelberg Artists Society Art Exhibition'** at ILCH. The exhibition will showcase the incredible and diverse talents and skills of our members at the **Loft275 Gallery**. Additionally, our members will be **'Artists in Residence'** in the **Mungga Studios**, offering a variety of workshops and talks throughout the exhibition for the public.

\* **Exhibition Dates:** Thursday, 14th August to Sunday, 7th September 2025

\* Location: Level 1, Ivanhoe Library & Cultural Hub, 275 Upper Heidelberg Road, Ivanhoe

\* Our members will have the opportunity to paint, sketch, and draw to their hearts' content during library hours.

\* **Library Hours:** Monday to Wednesday: 9:00 am - 9:00 pm; Thursday: 9:00 am - 10:00 pm; Friday: 9:00 am - 6:00 pm; Saturday & Sunday: 10:00 am - 5:00 pm.

\* Yarra Plenty Regional Library **Wi-Fi access will require a Yarra Plenty library membership.**

\* To ensure everyone has a chance to participate, we will be organizing a roster for our members, so don't worry – you won't be expected to attend all day or every day!

\* As we'll have access to the studios every day during library hours, our HAS members have voted unanimously to **not** use the hall during the 3-week exhibition period.

\* There will be no HAS meetings at the Main Rd Community Hall on the following Saturday's: **16th August, 23rd August, 30th August and 6th September 2025.**

We look forward to celebrating this milestone with you!

## PLANNING AHEAD - KEY DATES:

DAY	DATE	EVENT
<b>Monday</b>	<b>11th August 2025 (Time: TBC)</b>	<b>Delivery of artworks to Loft275 Gallery, ILCH</b>
Tuesday, Wednesday	<b>12th August 2025, 13th August 2025</b>	Installation of artworks by Banyule Arts, Art Curator
<b>Thursday</b>	<b>14th August 2025 (6:30pm-8:30pm)</b>	<b>Opening Night Celebration</b>
Friday - Sunday	<b>15th August - 7th September 2025</b>	Artists' in Residence - Mungga Studios
Sunday	<b>7th September 2025</b>	Pack up and clean Mungga Studios
<b>Monday</b>	<b>8th September 2025 (Time: TBC)</b>	<b>Collection of artworks from Loft275 Gallery</b>

## CONGRATULATIONS TO OUR HAS MEMBERS FOR THE FOLLOWING AWARDS:

♦ Carolyn Aitken, for her entry into the **2025 Streeton Roberts McCubbin Awards Exhibition** through the Sherbrooke Art Society. Carolyn received the 'Tom Roberts Commendation Award' for her painting 'Gum Bark' at the Sherbrook Gallery, Monbulk Rd, Belgrave. A fantastic acrylic painting!

♦ Margaret Nigro, for her entry 'Scruffy', into the **A1 Darebin Art Salon 2025**. Margaret was the winner of the 'People's Choice Award - Drawing/Printmaking Prize'. A fantastic drawing!



## SPECIALTY ART TECHNIQUE CLASSES

We thank Julie Cunningham for facilitating the 3 specialty classes in 'Scratchboard' techniques. Our members that participated were excited to learn new techniques and created fantastic artworks. Thank you Julie!

We thank Malcolm Drysdale for facilitating 5 specialty classes in Cartoon Drawing. Remaining 'Drawn Character Development For Cartoon Drawing' classes: **CLASS 5: 12th JULY.**

Looking forward to a successful year of art shows, events, creativity, and camaraderie! Remember, our brushes are more than just tools – they are bridges between imagination and reality.

Keep well, have fun, and happy creating! *Kathy Lewis*

(Katherine Chouliaras Lewis) **President, Heidelberg Artists Society**

## *A Message from the Editor...*



Dear HAS Members,

Our bi-monthly newsletters serve as a showcase of the remarkable artworks, craftworks, demonstrations, and workshops created by our talented members and invited artists during our weekly sessions throughout the year. For additional updates, information, and captivating visuals, I encourage you to connect with us on our HAS social media platforms:

Facebook: [Heidelberg Artists Society](#) Instagram: [heidelbergartists](#) Website: [www.has.org.au](http://www.has.org.au)

Please keep an eye on your email account for HAS Noticeboard notifications, bi-monthly newsletters, changes to our Program and any other electronic correspondence and events.

I kindly request you notify us promptly, in-person, by phone or email, of any changes to your email address, contact details, emergency information, or if you have misplaced your HAS ID and lanyard. Your cooperation ensures that our communication remains seamless and effective.

Should you be planning a holiday that will affect your attendance to our sessions, or have exciting news to share, please inform us asap in-person, by phone or email. Your engagement and contributions are vital to the vibrancy of our community.

A heartfelt thank you to all our HAS members for enriching our bi-monthly newsletters with your valuable contributions. Wishing you and your families continued safety and wellness.

Kind regards,

Kathy Lewis

(Katherine Chouliaras Lewis)

HAS President & Newsletter Editor



### SENIOR ART SUPPLIES

85 Silverdale Road, Eaglemont 3084

Phone: 9191-7862

Mon-Fri: 9:00am-5:30pm, Sat: 10am-4:00pm

(closed public holidays)

W: [www.seniorart.com.au/](http://www.seniorart.com.au/)

### HAS ~ SPONSOR

HAS is proud to announce our current sponsor, Senior Art Supplies in Eaglemont. Please remember to show your membership card to receive a **10% discount** on your purchases.

### Heidelberg Artists Society Social Luncheon Invitation



You and a partner are cordially invited to  
attend our mid-year social lunch at:

**The Templestowe Hotel Bistro**  
Saturday, 26th July 2025 at 12.30pm  
23 Parker Street, Templestowe

#### RSVP

By Saturday, 12th July 2025 to:

Kathy Lewis - Mobile: 0407 615 865

Or E-mail: [kchol@hotmail.com](mailto:kchol@hotmail.com)

### CALLING ALL ARTISTS SHARE YOUR SKILLS, TIPS & TRICKS!

Do you have a particular skill or technique, a creative shortcut, or an inspiring discovery in your artistic journey or everyday life? Maybe a question or idea that could spark a great conversation?

*We would love to hear it!*

Send your skill or technique tips, tricks, ideas, discoveries, or questions to: [kchol@hotmail.com](mailto:kchol@hotmail.com)

Let's inspire and support each other in our creative paths  
and presentation of our works!



### RITCHIE'S FRAMING SERVICE

Contact, Ron Richie M: 0401 154 725 for a quote.

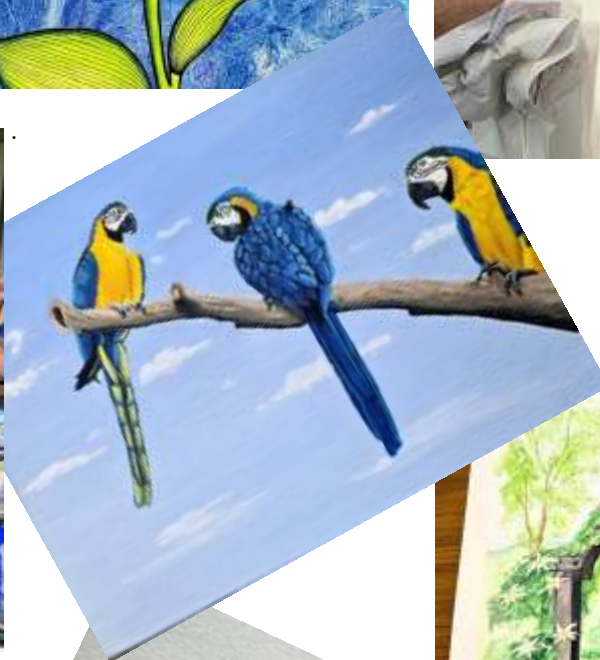


### PHOTOSHOP TUTORING

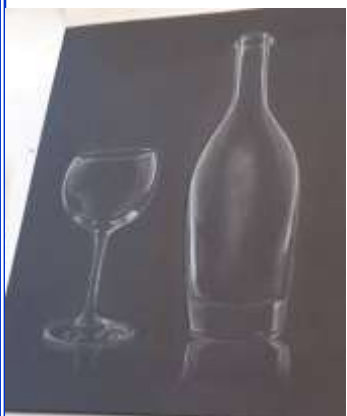
Contact, Malcolm Drysdale

E-mail: [mdrysdale75@gmail.com](mailto:mdrysdale75@gmail.com) for a quote.











## MELBOURNE INTERNATIONAL FLOWER & GARDEN SHOW

26 –30 MARCH 2025

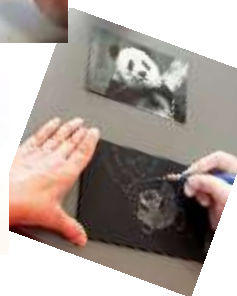
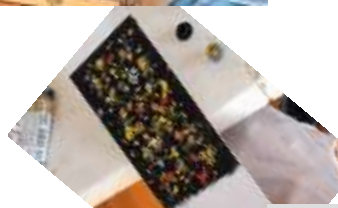
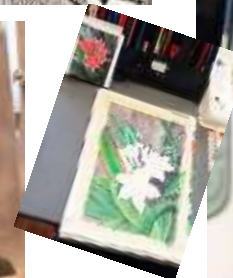
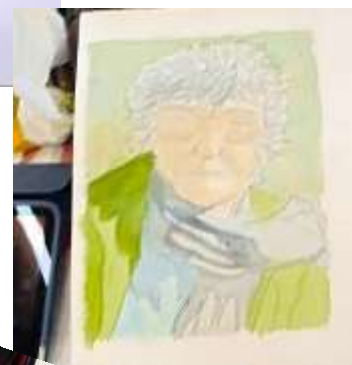
We were delighted to partner with the Doncaster Templestowe Artists Society (DTAS) to offer our members the exciting opportunity to participate in the 2025 Melbourne International Flower and Garden Show (MIFGS) under the HAS banner.

In total, we received 59 entries; 42 from 11 HAS members and 17 from 7 DTAS members, and we're thrilled to share that many artworks sold! It was truly a fantastic art show, and we extend our warmest congratulations and heartfelt thanks to everyone who submitted artworks and volunteered their time.

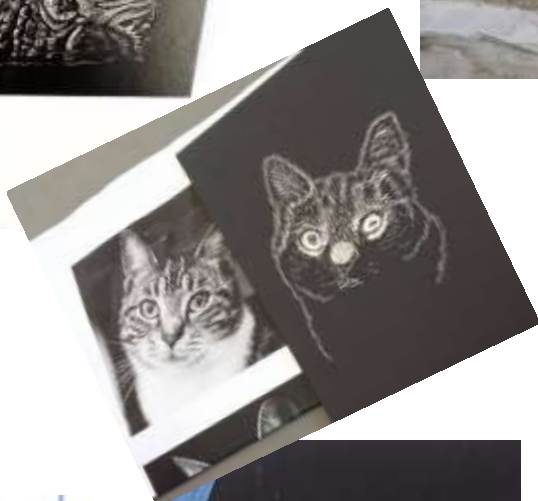
A special thank you to Michelle Forssberg for her outstanding leadership and dedication throughout the entire process, and to Dushka Mihajlovska and Pam Ziedas for their invaluable help in transporting, setting up, and supporting the organisation of our 2025 MIFGS exhibition. *We're already looking forward to seeing what our members will bring to MIFGS 2026!*



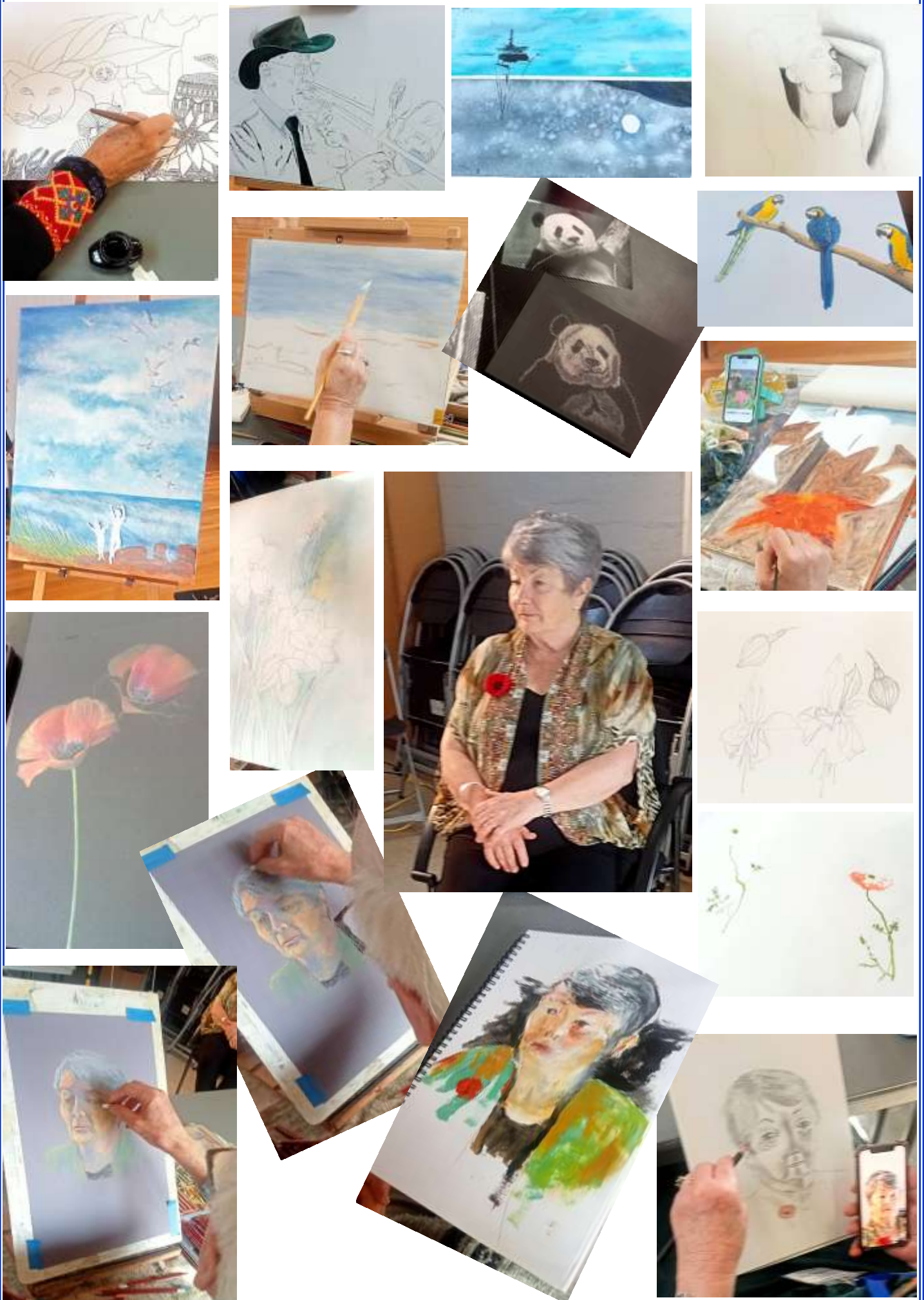


















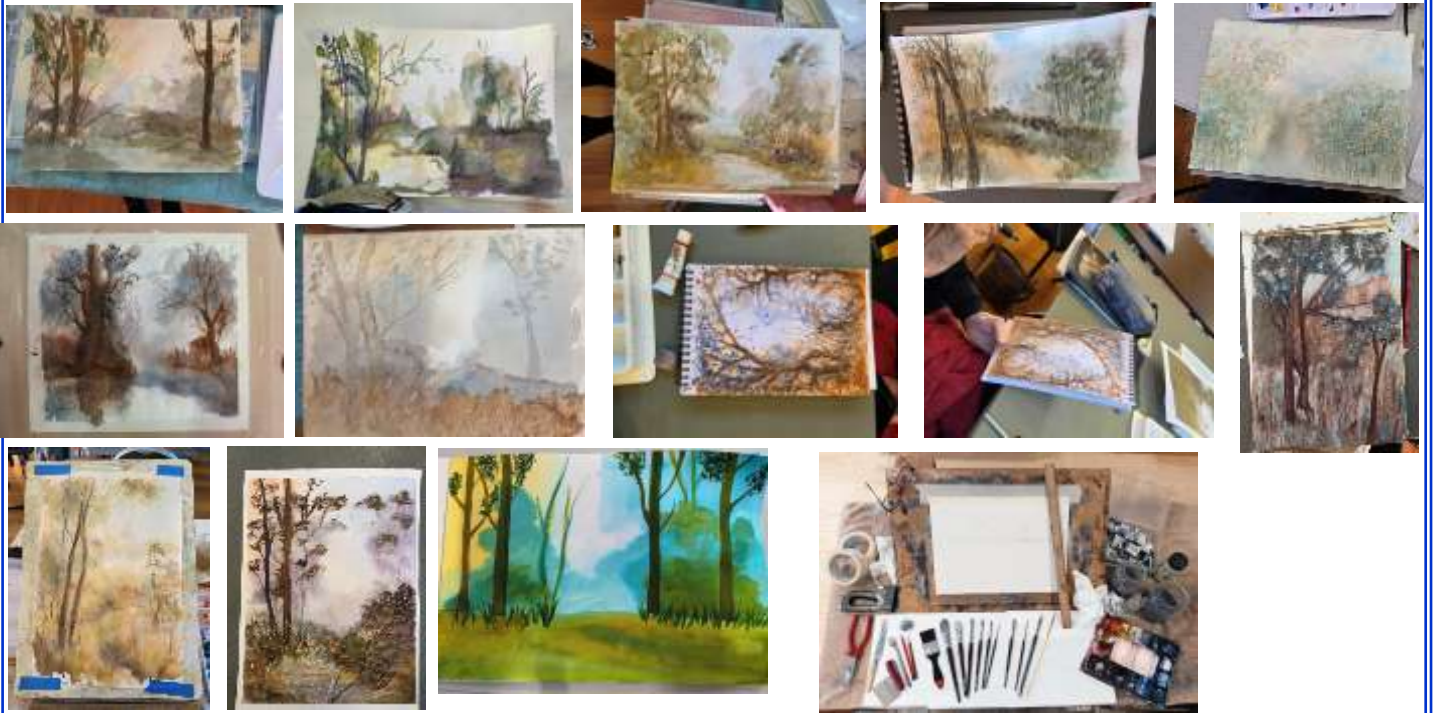
## WATERCOLOUR DEMONSTRATION/WORKSHOP WITH ARTIST JULIAN BRUERE

10 May 2025

We were fortunate to have the esteemed and incredibly talented Julian Bruere share his expertise with us through a captivating watercolour demonstration. His clear, step-by-step teaching approach empowered our members to create beautiful artworks and paint with confidence. *Thank you, Julian, for an inspiring and memorable session!*







## JULIAN BRUERE'S STUDIO SET UP & MATERIALS

*Written by Julian Bruere.*

- Brushes:** Range from Neef Synthetic (Round with point, Burgundy Handle) Fine No3, Med No7, Lg No12, Lg Oval ¾, 1 inch, ½, 1 and 2 inch Flat, Filbert Comb ½ and ¾ inch, No 6 Script/Rigger, and your own brush selection of Fans and Daggers. A Bright Stiff Synthetic ½ inch is ideal for rubbing back highlights. Neef Anders Andersson (Dagger) Small and/or Medium.
- Board:** MDF Smooth Surface, or other, approx. 450mmx600mm 900mm x 600mm for Full Sheet
- Easel:** Metal or Aluminium tripod easel (needs to have adjustable angles for the work surface and extendable/variable legs for uneven ground or uneven artists)
- Palette:** Art Spectrum Colour Keeper or by choice (allow for separate wells for colours and some larger clean areas for mixing) Consider mixing warm washes in one area and cool washes in another.
- Paper:** Boahung (Seniors Art Supplies) Arches or Saunders Cold Press, 185gsm or 300gsm, in sheet form torn into half and quarter sheet format (22" x 15", 11" x 15") Consider also various Blocks with gummed edges or Pads.
- Pencils:** 2B/B Pencil or Clutch pencils with replacement leads (5mm or 7mm)
- Other:** Towel, Staple Gun and low-profile staples or Masking tape 18mm/24mm, Water Pot, Art Rags/Tissues, Spray Bottle, Toothbrush, Pocket Knife, or old Butter Knife for scratch techniques.
- Winsor and Newton and Daniel Smith 15ml tubes are good quality and quantity. Art Spectrum Tasman Blue is good for opaque blue leaves. Some colours can work ok in the same well. Palette can have a Warm area, Cool area and Grunge area. *Written by Julian Bruere.*



Art Spectrum	Daniel Smith	Winsor and Newton	
Tasman Blue	Cadmium Yellow or Hansa Yellow Medium	Burnt Sienna	Alizarin Crimson
	Cobalt Blue	Cadmium Red	Ultramarine Blue
	Lemon Yellow	Cobalt Turquoise	White (Gouache)
	Neutral Tint.	Cobalt Turquoise Light	
	Pyrral Orange	Raw Umber	
	Raw Sienna	Shadow Violet	
	Shadow Violet		
	Winsor Violet		
	Cerulean Blue (varies dramatically from brand to brand, like Daniel Smith Cerulean Blue Chromium)		







## Warringal Shopping Centre Pop-Up HAS Art Shop - Open day 17 May until 9th August 2025

A huge thank you to all who helped with the move and setup on **Tuesday 13 May 2025**. Your support made it all possible!

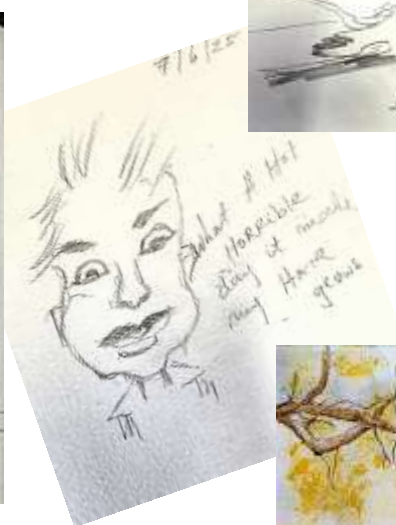
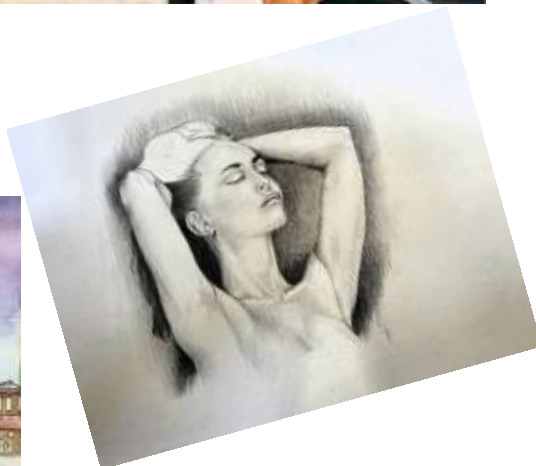
Since our opening, we have been receiving positive feedback and comments on the fantastic artworks on display and have had consistent sales. Our pop-up shop is open **Monday to Saturday, 10:30am–4:30pm**, and it's filled with an impressive array of original artworks, prints, handcrafted jewellery, greeting cards, and woollen creations by our talented HAS members. A huge thank you to our HAS Committee and volunteers for helping with rosters and flyer distribution, your enthusiasm and commitment are truly making a difference.



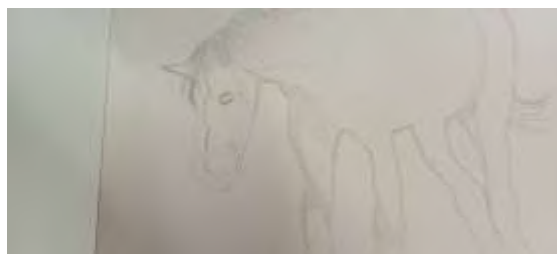




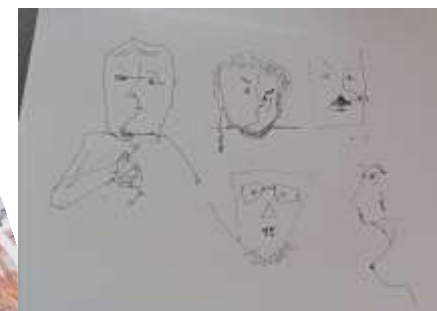














Sharing a few photos from Kathy Lewis's holiday to China  
*Enjoy folks!*

19-30 March 2025





## ***PAINTING TIPS & TRICKS!! ~ DID YOU KNOW?***

### **GELATINE PLATE PRINTMAKING RECIPE:**

You can make your own Gelatine Plate for Gelli Printing. Here is the link to the 'Gelatine Plate Printmaking Recipe': <https://kimherringe.com.au/printmaking/gelatin-plate-printmaking-recipe/>

*Thank you, Melissa Lapadula for this reference!*

Another highly effective and artist favoured gelatine plate printmaking recipe, designed for durability, reusability, and excellent print quality. This recipe strikes a balance between flexibility and firmness, allowing you to use it for mono-printing techniques without it cracking or drying too fast.

### **INGREDIENTS**

- **Unflavoured gelatine powder:** 100grams (about 10 standard 7g packets)
- **Glycerine (vegetable):** 300ml (acts as a plasticizer and preservative)
- **Water:** 600ml (distilled is ideal)
- **Optional:** A few drops of essential oil (lavender or tea tree) to inhibit mould

### **INSTRUCTIONS**

#### **Bloom the gelatine:**

- Sprinkle the gelatine over **300ml of cold water** in a large bowl.
- Let it sit for 10–15 minutes until it absorbs the water and swells.

#### **Heat the glycerine and remaining water:**

- In a separate saucepan, heat 300ml glycerine and 300ml water over medium heat.
- Stir gently and heat until just before boiling.

#### **Combine & dissolve:**

- Pour the hot glycerine/water mixture into the bloomed gelatine.
- Stir slowly until all gelatine is fully dissolved and the mixture is smooth.
- Skim off any foam or bubbles from the surface.

#### **Pour into molds:**

- Use a shallow tray, baking dish, or acrylic frame as a mold (Aim for approximately 1.3cms to 1.9cms thick (½ to ¾ inch).
- Lightly oil the tray if you want easier removal.
- Let sit at room temperature for 30 minutes, then refrigerate for 4–6 hours (or overnight).

#### **Unmold (optional):**

- Carefully run a plastic spatula around the edges and peel out the plate.
- Place it on a clean plexiglass or acrylic sheet for printing.

#### **Storage & Care:**

- Store covered in a cool, dry place (not in the fridge, unless your climate is very hot/humid).
- Wrap in plastic wrap or keep in a lidded container.
- If it becomes nicked, gently reheat and remold.
- Clean with a damp sponge (no soap).

#### **Tips for Best Results:**

- Use open acrylics or slow-drying paints for longer working time.
- Keep plate clean and moist between sessions.
- Do not freeze - it will crack.
- If you see mould, you can reheat the plate, skim off the top layer, and reset it.

### **TO CHANGE OIL PAINTS TO WATER-BASED OILS, YOU CAN USE THE FOLLOWING METHODS:**

- \* Use innovative oils made with a modified oil binder that allows them to be thinned and cleaned up with water.
- \* Use a low-odour paint additive like **Schmincke Medium W** to transform traditional oil paints into water-mixable oils.
- \* Consider using water-mixable brands that have developed mediums specifically for water-mixable oils.

### **OIL PAINT ADDITIVE - SCHMINCKE MEDIUM W**

Schmincke Medium W is a revolutionary, low-odour oil paint additive that transforms traditional oil colours into water mixable oils.

Combining one part Medium W with two parts of oil paint allows you to use simple water for both thinning your paints and cleaning your tools - no solvents required! At the same time, Medium W increases the gloss and transparency of your colours.





## ***PAINTING TIPS & TRICKS!! Continued .....***

Colours mixed with Medium W may undergo a shift in colour and appear lighter or “milky” while wet (as do most brands of water mixable oil). Not to worry - your colours will harmonise back to their original tones during the course of the drying process.

This effect may be more or less pronounced, depending on the colour of the oil and the amount of water you add for thinning. The darker the oil paint and the more water added, the lighter in hue the wet paint film will appear. However, rest assured that all colours will be restored to their original brilliance once dry.

REF: [Medium that changes oil paints to water based oils](#)

### **‘VELVET’ SOAP AS A PAINT BRUSH CLEANER & CONDITIONER FOR ALL MEDIUMS?**

**Velvet soap** is affordable and readily available at any supermarket. Warwick Cheney, has shared this brush cleaning tip with us:

- ◆ dry your brush with paper towel or a rag,
- ◆ gently wring out your brushes,
- ◆ let the brush dry,
- ◆ clean your brush in warm water with the velvet soap,
- ◆ shake and mold the brush to shape,
- ◆ your brush is good as new and ready for use.

*Thank you Warwick for your suggestion!*

### **AN ALL PURPOSE BRUSH CLEAN UP PRODUCT: ‘DIGGERS PAINT CLEANUP’:**

I use this, and it works well. This product is affordable and available at Bunnings Hardware and other hardware stores. ‘Diggers Paint Cleanup’ is: Biodegradable, Low odour, Non-flammable and Water Based. It cleans and conditions paint brushes and rollers after use, removing both oil and water based paints. It can also be used to clean fresh paint spills from hard surfaces, textiles and carpet. As an added bonus, it conditions equipment – leaving bristles soft and in great shape for your next project!

### **‘OLIVE OIL’ & ‘OLIVE OIL SOAP’ A PAINT BRUSH CLEANER & CONDITIONER FOR OIL PAINTS:**

Olive oil and Olive Oil Soap will clean oil paint off your brush and condition it too. Just use paper towel or a rag to clean the oil paint off your brush after dipping it into a little oil or follow the same tip for ‘Velvet Soap’ above, if you’re using Olive Oil Soap.

*Thank you Andrew and Ingrid for your suggestion!*

### **“WHY DO SOME ARTISTS SPRAY THE BACK OF A CANVAS WITH WATER BEFORE PAINTING?”**

**Misting or Wetting the back of a primed canvas with water before painting with acrylic paints:**

- ◆ Misting makes the canvas surface taut, removes dents or pressure spots.
- ◆ A taut, canvas should sound like a drum when you tap on it.
- ◆ Wetting the canvas, moistens the front of the canvas enough to keep acrylic paint wet but not dripping, workable for longer and the acrylic paint blends easier.

*Thank you Pam Lowry & Val Pratt for your question!*

### **REMOVING MASKING FLUID OFF YOUR PAINT BRUSH**

This product

***A good painting surface is the basis of your beautiful creation!***

### **REMINDER TO ALL HAS MEMBERS AND GUESTS**

⇒ Please refrain from using cleaning solvents that omit an odour.

## **CALLING ALL ARTISTS ~ SHARE YOUR TIPS & TRICKS!**

Do you have a favourite technique, a creative shortcut, or an inspiring discovery in your artistic journey? Maybe a question or idea that could spark a great conversation?

We would love to hear it!

Send your art-related tips, tricks, ideas, discoveries, or questions to: [kchol@hotmail.com](mailto:kchol@hotmail.com)

Let’s inspire and support each other in our creative paths!



# ART SHOW GUIDELINES

## PRESENTATION OF ARTWORK AND CRAFTWORK

**Presentation is important!**

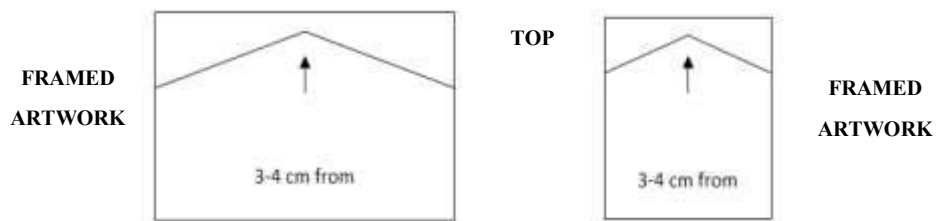
### ENTRY FORMS, FEES & GENERAL INFORMATION:

- ♦ Members must complete entry forms and pay the entry fee to the Treasurer, prior to submitting forms to the Art Show Sub-Committee. *(Refer to entry forms for further details).*  
The HAS Art Show Sub-committee reserves the right to accept or reject artwork & craftwork.
- ♦ All entries must be the original work of the artist.
- ♦ All artworks must include the following details on the back: *(We suggest you **print** as neatly as possible)*
  - ♦ Title of artwork.
  - ♦ Size of artwork/frame. (optional)
  - ♦ Artist name, contact phone number, email and/or website.
  - ♦ Medium.
  - ♦ Price.
- ♦ Corrections on labels by over-writing or striking out price or words is **not** acceptable.

**PLEASE NOTE:** Thin canvas paintings will not be accepted for hanging, they must be either framed or entered as unframed artworks.

### GALLERY/DEEP CANVAS & FRAMED ARTWORKS:

- ♦ Paintings must be properly framed and ready to hang with **D-rings** and **wire**.  
**Staples and cord are not accepted.**
- ♦ The **D-rings** should be approximately **one third down from the top of the frame**. *(Refer: Image below)*
- ♦ The **wire** should have enough slack to finish **3cms - 4cms** (1-2 inches) **from the top of the frame**.  
*(Refer: Image ....)*



- ♦ We recommend the wire ends be covered with tape to prevent injury when handling paintings.
- ♦ We recommend you place felt protector pads on the back of artworks to reduce any marks on walls.
- ♦ Frames must be cleaned thoroughly and any scratches or defects should be fixed prior to inserting your artwork. Perhaps the frame might need to be repainted? If so, spray paints work a treat.
- ♦ Frames with glass must be cleaned on the inside and outside before inserting artwork.
- ♦ Artworks must have a HAS card label attached on the back of the frame. The card should clearly show the title, medium, artists name and price. *(We suggest you **print** as neatly as possible).*



### UNFRAMED ARTWORKS:

- ♦ Unframed works (boards, canvas, paper, prints) should be totally covered with clear cellophane. There should be no gaps on the back of the artwork.
- ♦ All art/craftworks should have the title, price and artists details on the back.
- ♦ Tape securing the cellophane should not be taped onto the original painting, print or card.
- ♦ Prints must be clearly labelled '**PRINT OF ORIGINAL ARTWORK**' or '**LIMITED EDITION PRINT OF ORIGINAL ARTWORK**' whichever is applicable, on the back of the artwork.
- ♦ All unframed artworks on paper, **must have a backing board** to prevent creasing or damage of artwork.

### CRAFTWORK & CARDS: *(Prices per item, per artist should be clearly displayed).*

- ♦ Craftworks must include: title, price, artists details and we recommend a gift box/bag or paper bag.
- ♦ Greeting cards must include: title, artists details, individual envelopes and cellophane pockets.
- ♦ Postcards must include: title, artists details, individual envelopes or paper bags.

**Remember to ask yourself: "If it was me buying this item, would I like how it is presented?"**

**Good luck & happy painting & creating! Happy customer = Happy Artist!**







Date	Time	HAS PROGRAM FOR 2025* (*Please Note: Look for changes throughout the year)	COLOUR KEY: ■ Important ■ Demo/Wshop
------	------	---	--

## JUNE

## JUNE

28 SAT	1pm	SESSION: Working on your own project (BYO: Materials)	BYO CUP/MUG
28 SAT	1pm	SESSION: Portraiture Painting - Cost: \$5/Member. \$10/Non-Member. LOCATION: Dining Room (BYO: Materials)	

## JULY

## JULY

5 SAT	1pm	DEMONSTRATION/WORKSHOP: Artist: Julian Bruere (BYO: Drawing Materials) ‘Fundamental drawing of the Human Anatomy’ Cost: \$0/Member. \$10/Non-Member.	BYO CUP/MUG
12 SAT	1pm RSVP	SESSION: Copy a painting of an old master (BYO: References/materials) RSVP: TO KATHY LEWIS re: LUNCH @ TEMPLESTOWE HOTEL	
12 SAT	1pm	CLASS 5: CARTOON DRAWING with Malcolm Drysdale (BYO: Materials) LOCATION: DINING ROOM Cost: \$5/Member \$10/Non-Member.	
19 SAT	1pm	SESSION: Painting Scapes: City / Land / Sea (BYO: Reference & materials)	
19 SAT	1pm	SESSION: Portraiture Painting Cost: \$5/Member \$10/Non-Member. LOCATION: Dining Room (BYO: Materials)	
26 SAT	12.30pm	SOCIAL EVENT: Social Lunch - TEMPLESTOWE HOTEL 23 Parker Street, Lower Templestowe Cost: Your selected food & drinks.	

## AUG

## AUGUST

2 SAT	1pm	DEMONSTRATION/WORKSHOP: Artist: Thelma Cardwell - Pastel Drawing Cost: \$0/Member. \$10/Non-Member. (BYO: Materials)	BYO CUP/MUG
9 SAT	1pm 3:30pm	SESSION: 3D drawing (BYO: Reference & materials) COMMITTEE MEETING	
10 SUN	8.30am- -2.00pm TBC ??	? EAGLEMONT VILLAGE SUNDAY MARKET - HERITAGE DAY - TBC DELIVERY OF ARTWORKS / COLLECT ARTWORKS	
11 MON	TBC	ILCH - HAS EXHIBITION - DELIVERY OF ARTWORKS LOFT275 GALLERY, Level 1, 275 Upper Heidelberg Rd, Ivanhoe	
14 TH	6:30pm - 8:30pm	ILCH - HAS EXHIBITION ‘OPENING’ CELEBRATION LIGHT REFRESHMENTS PROVIDED LOFT275 GALLERY - Level 1, 275 Upper Heidelberg Rd, Ivanhoe	
15 FRI	10:30am -4:30pm	ILCH - Painting in the Mungga Studios Own Project, BYO Materials - Duty Roster TBA	
16 SAT	10:30am -4:30pm	ILCH - Painting in the Mungga Studios Own Project, BYO Materials - Duty Roster TBA	
17 SUN	11am- 4pm	ILCH - Painting in the Mungga Studios Own Project, BYO Materials - Duty Roster TBA	





Date	Time 1pm-3:30pm	HAS PROGRAM FOR 2025* (*Please Note: Look for changes throughout the year)	COLOUR KEY: ■ Important ■ Demo / W/shop
------	--------------------	---	---

## AUG

## AUGUST

18 MON	10:30am -8pm	ILCH - Painting in the Mungga Studios <b>Own Project, BYO Materials - Duty Roster TBA</b>	<b>BYO CUP/MUG</b>
19 TUE	10:30am -8pm	ILCH - Painting in the Mungga Studios <b>Own Project, BYO Materials - Duty Roster TBA</b>	
20 WED	10:30am -8pm	ILCH - Painting in the Mungga Studios <b>Own Project, BYO Materials - Duty Roster TBA</b>	
21 TH	10:30am -8pm	ILCH - Painting in the Mungga Studios <b>Own Project, BYO Materials - Duty Roster TBA</b>	
22 FRI	10:30am -4:30pm	ILCH - Painting in the Mungga Studios <b>Own Project, BYO Materials - Duty Roster TBA</b>	
23 SAT	10:30am -4:30pm	ILCH - Painting in the Mungga Studios <b>Own Project, BYO Materials - Duty Roster TBA</b>	
24 SUN	11am- 4pm	ILCH - Painting in the Mungga Studios <b>Own Project, BYO Materials - Duty Roster TBA</b>	
25 MON	10:30am -8pm	ILCH - Painting in the Mungga Studios <b>Own Project, BYO Materials - Duty Roster TBA</b>	
26 TUE	10:30am -8pm	ILCH - Painting in the Mungga Studios <b>Own Project, BYO Materials - Duty Roster TBA</b>	
27 WED	10:30am -8pm	ILCH - Painting in the Mungga Studios <b>Own Project, BYO Materials - Duty Roster TBA</b>	
28 THU	10:30am -8pm	ILCH - Painting in the Mungga Studios <b>Own Project, BYO Materials - Duty Roster TBA</b>	
29 FRI	10:30am -4:30pm	ILCH - Painting in the Mungga Studios <b>Own Project, BYO Materials - Duty Roster TBA</b>	
30 SAT	10:30am -4:30pm	ILCH - Painting in the Mungga Studios <b>Own Project, BYO Materials - Duty Roster TBA</b>	
31 SUN	11am- 4pm	ILCH - Painting in the Mungga Studios <b>Own Project, BYO Materials - Duty Roster TBA</b>	

## SEP

## SEPTEMBER

1 MON	10:30am -8pm	ILCH - Painting in the Mungga Studios <b>Own Project, BYO Materials - Duty Roster TBA</b>	<b>BYO CUP/MUG</b>
2 TUE	10:30am -8pm	ILCH - Painting in the Mungga Studios <b>Own Project, BYO Materials - Duty Roster TBA</b>	
3 WED	10:30am -8pm	ILCH - Painting in the Mungga Studios <b>Own Project, BYO Materials - Duty Roster TBA</b>	
4 THU	10:30am -8pm	ILCH - Painting in the Mungga Studios <b>Own Project, BYO Materials - Duty Roster TBA</b>	
5 FRI	10:30am -4:30pm	ILCH - Painting in the Mungga Studios <b>Own Project, BYO Materials - Duty Roster TBA</b>	
6 SAT	10:30am -4:30pm	ILCH - Painting in the Mungga Studios <b>Own Project, BYO Materials - Duty Roster TBA</b>	
7 SUN	11am- 4pm	ILCH - Painting & Pack up - Mungga Studios <b>HAS EXHIBITION: CLOSED</b>	
8 MON	? TBC	ILCH - Loft 275 Gallery - <b>COLLECTION OF ARTWORKS - TBC</b>	
13 SAT	1pm	SESSION: Still Life painting <b>BYO: Reference &amp; materials)</b>	<b>BYO CUP/MUG</b>
20 SAT	1pm	SESSION: Tonal Drawing (Any medium) <b>(BYO: Materials)</b>	
27 SAT	1pm	SESSION: Working on your own project <b>(BYO: Materials)</b>	
27 SAT	1pm	SESSION: Portraiture Painting - <b>Cost: \$5/Member. \$10/Non-Member.</b> <b>LOCATION: Dining Room (BYO: Materials)</b>	



Date	Time	HAS PROGRAM FOR 2025*	COLOUR KEY:
	1pm-3:30pm	(*Please Note: Look for changes throughout the year)	<div style="display: inline-block; width: 10px; height: 10px; background-color: red; border: 1px solid black;"></div> Important <div style="display: inline-block; width: 10px; height: 10px; background-color: green; border: 1px solid black;"></div> Demo / W/shop

## OCT

## OCTOBER

5 SAT	1pm	SESSION: Working on your own project (BYO: Materials)	BYO CUP/MUG
12 SAT	1pm	SESSION: Painting on a Dark or Black Background (BYO: Materials)	
19 SAT	1pm	SESSION: Painting an Abstract (Any medium) (BYO: Reference & materials)	
26 SAT	1pm	SESSION: Painting Fruit (BYO: Reference & materials)	
26 SAT	1pm	SESSION: Portraiture Painting - Cost: \$5/Member. \$10/Non-Member. LOCATION: Dining Room (BYO: Materials)	

## NOV

## NOVEMBER

1 SAT	1pm <b>OPEN</b>	SESSION: Painting Seasons - SUMMER (BYO: Reference & materials) <b>HAS COMMITTEE NOMINATIONS &amp; VOTING OPEN</b>	BYO CUP/MUG
8 SAT	1pm	SESSION: Working on your own project (BYO: Materials)	
15 SAT	1pm <b>CLOSE</b> RSVP 3:30pm	SESSION: Card/Decoration Making (BYO: Materials) <b>HAS COMMITTEE NOMINATIONS &amp; VOTING CLOSE</b> RSVP: TO KATHY LEWIS re: END OF YEAR LUNCH COMMITTEE MEETING	
15 SAT	1pm	SESSION: Portraiture Painting - Cost: \$5/Member. \$10/Non-Member. LOCATION: Dining Room (BYO: Materials)	
22 SAT	1pm 3:30pm	<b>ANNUAL GENERAL MEETING</b> 👉 ALL MEMBERS REQUESTED TO PLEASE ATTEND COMMITTEE MEETING	
29 SAT	12.30pm	 <b>END OF YEAR - SOCIAL LUNCH</b> (Subsidised by HAS for HAS members only) <b>TEMPLESTOWE HOTEL</b> 23 Parker Street, Lower Templestowe 	

## DEC

## DECEMBER

6 SAT	1pm <b>DUE:</b>	SESSION: Card/Decoration Making / Own project (BYO: Materials) <b>DUE: Entry forms for Eaglemont Village Market</b> <ul style="list-style-type: none"> <li>SCRATCHED, DAMAGED OR SOILED FRAMES <u>WILL NOT BE ACCEPTED.</u></li> <li>UNFRAMED ARTWORKS MUST BE TOTALLY SEALED WITH CELLOPHANE. SOILED MATT BOARDS <u>WILL NOT BE ACCEPTED.</u></li> </ul>	BYO CUP/MUG
7 SUN	8.30am 2.00pm	<b>EAGLEMONT VILLAGE SUNDAY MARKET - CHRISTMAS MARKET</b> BRING: ARTWORKS & CRAFTWORKS COLLECT: UNSOLD PAINTINGS	

**Our thanks to Kate Thwaites MP and staff for printing this HAS Newsletter**